

Love North Chingford Wild Flower Meadow

The Green Walk (Near Parkhill Road)



Colour in the picture above

Planted and tended by 'Love North Chingford' Gardening Group Volunteers
Contact: northching@gmail.com

Project Funded by CityBridge Trust and with support from Waltham Forest Council

What species of wild flowers have been planted in the meadow?

Colour in the images



Bird's Foot Trefoil
Yellow Flower
May to September



Cowslip
Yellow Flower
April to May



Ox-Eye Daisy
White Flower/Yellow Centre
May to September



Lady's Bedstraw
Yellow Flower
June to September



Common Knapweed
Pinky Purple Flower
June to September



Betony
Pink Flower
June to September



Selfheal
Purple Flower
May to August



Autumn Hawkbit
Yellow Flower
August onwards



Cuckoo Flower
Pale Pink Flower
April to June



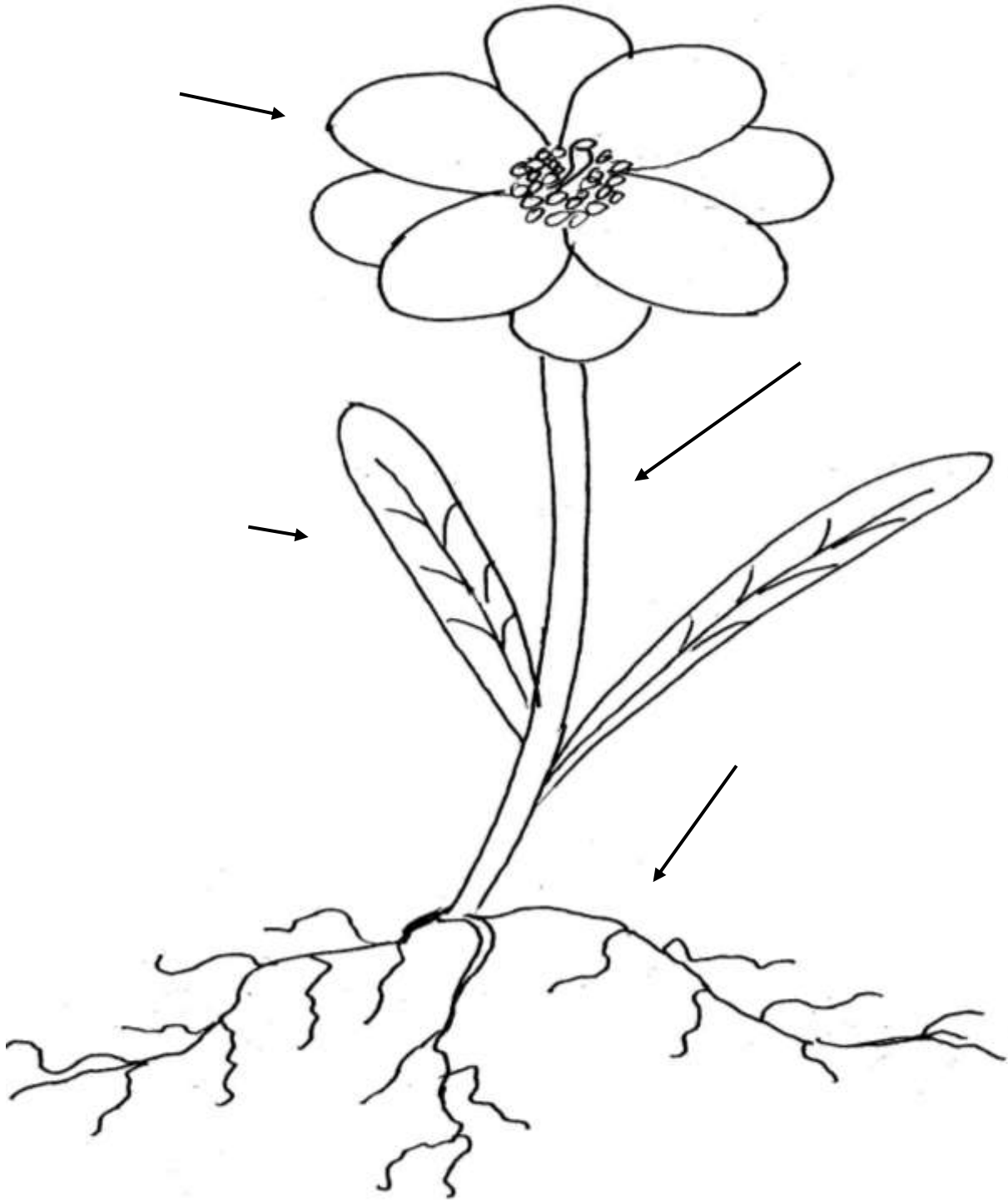
Ragged Robin
Pink Flower
May to August



Yellow Rattle
Yellow Flower
May to September

Parts of a Plant

Write the words in the boxes by the arrow pointing to the correct part of the plant.



Leaf

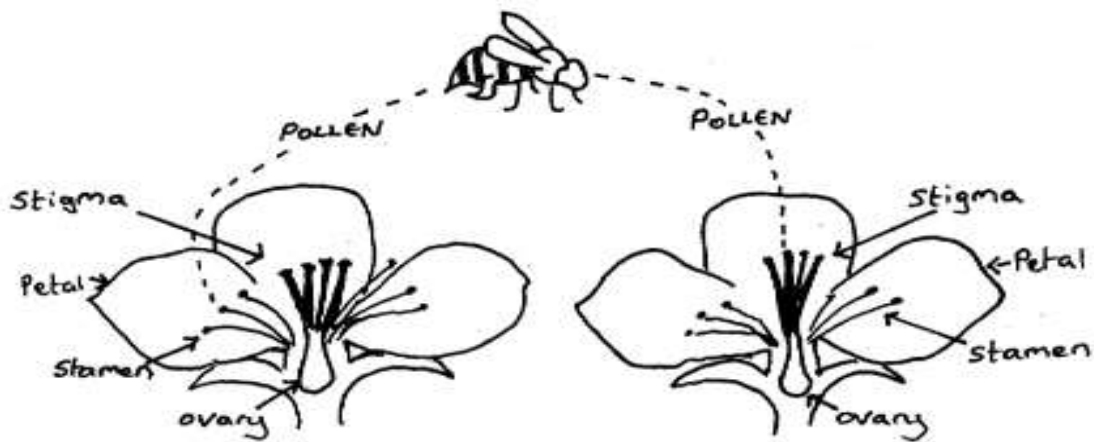
Stem

Roots

Petals

What creatures will visit these flowers?

Many types of insects enjoy the nectar that flowering plants provide and some of the butterfly and moth caterpillars eat the plants.



Write the name of the type of insect underneath the picture.

Moth, Bee, Hoverfly, Wasp, Beetle, Butterfly













The LNC Gardening Group volunteers hope that you will visit the Wild Flower Meadow to see what flowers and insects you can see and what the changes are at different times of year. When you visit, put a tick against the picture of the insects that you see.

No copyright infringements intended